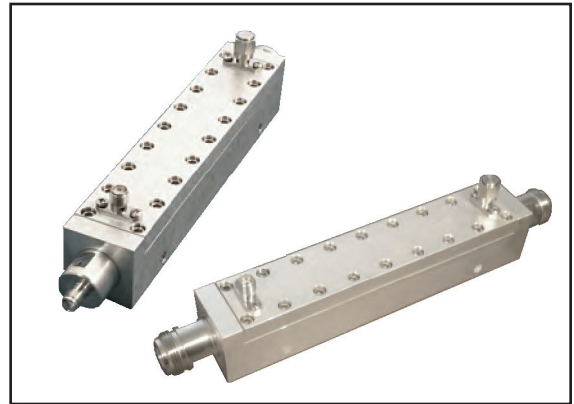




# Single Directional Couplers

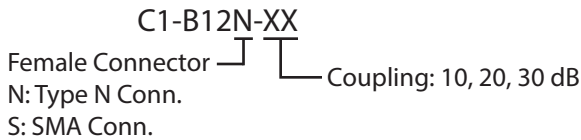
Type N or SMA, 500-18,000 MHz 10, 20, or 30 Single Directional Coupler

Model	C1-B12N-XX/C1-B12S-XX		
<b>Frequency Range:</b>	<b>500 - 18000 MHz</b>		
Coupling:	10 dB	20 dB	30 dB
Directivity:	15dB Typ. (8dB@18GHz)	15 dB (20 dB Typ.)	
Insertion Loss (dB):	0.3-0.7 dB Typ.	0.3 dB Max < 12.4 GHz 0.4 dB Max > 12.4 GHz	
VSWR:	1.25-1.35 Typical		
Nominal dB Value @ 500 MHz:	12.75 dB	22.5 dB	32.5 dB
Nominal dB Value @ 698 MHz:	11.0 dB	21.0 dB	31.0 dB
Coupling Accuracy, 1-18 GHz:	± 1.0 dB	± 1.0 dB	± 1.0 dB
Input Power, SMA:	10 Watts	50 Watts	
Input Power, Type N:	50 Watts	400 Watts	
Peak:	3 kW Minimum		
Connectors:	Type N or SMA female Mainline SMA(f) Coupled Port		

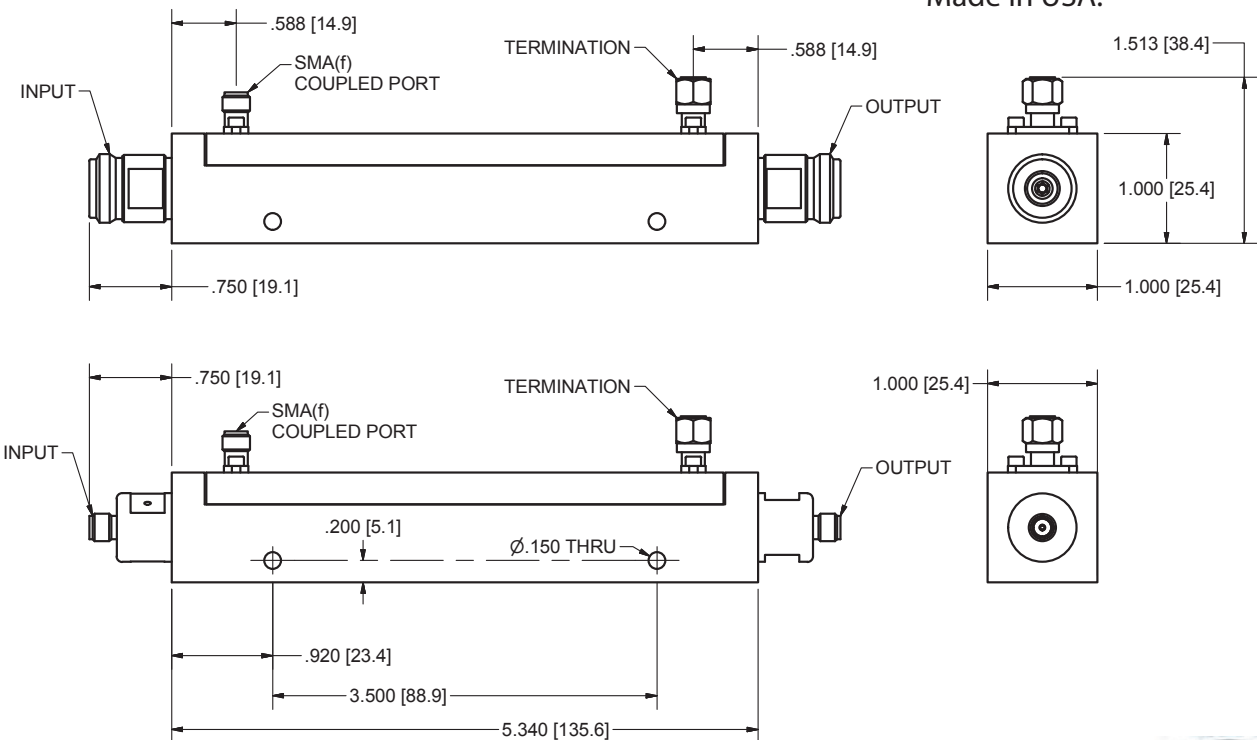


R&D Microwaves Model C1-B12 is one of R&D's new taperline products for broadband flat coupling value over the full frequency range 500 - 18000 MHz. The frequency sensitivity is included in the coupling accuracy specification over the full frequency range per the chart. The unit uses a unique tapered coaxial airline (Taperline) continuous taper construction with an RFI compression sealing system for temperature insensitive performance and RF leakage control. The air dielectric and solid conductors are associated with loss insertion loss, very high power, and low PIM performance.

- Low VSWR and Loss
- High Reliability, Low PIM
- All Coupling Values can be supplied with 4 connectors for use with an external termination



Termination:  
Removable 1 Watt Supplied with all Couplers



Made in USA.



R&D Microwaves LLC, 301 Rockaway Valley Road, Boonton, NJ 07005 USA  
Tel. 908.212.1696 [www.rdmicrowaves.com](http://www.rdmicrowaves.com)  
email: [sales@rdmicrowaves.com](mailto:sales@rdmicrowaves.com)

Rev 1.5  
11/19/15

