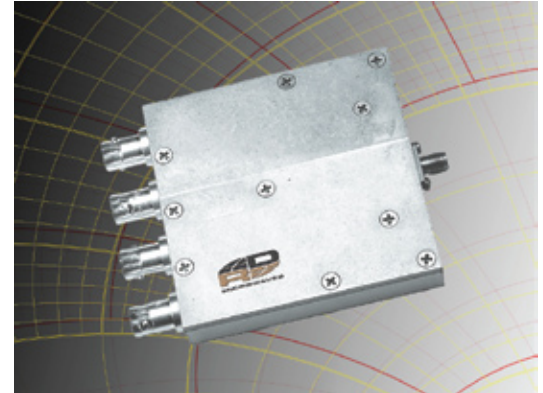


POWER DIVIDER

4 way 700-950 Mhz Model D4-A01

Model	D4-A01
Frequency range	700-950 MHz
Insertion Loss	6 dB NOM
Isolation	18 dB MIN.
Return Loss Input	17.7 dB
Output	20.8 dB
Amplitude Balance	0.04 dB \pm 0.1 dB
Phase Balance	\pm 1°
Max. Power	5 W
Connectors	SMA(f), BNC(f)
Material: Housing Inner conductor & Connectors	Aluminum, Conversion Coating RoHS Compliant Brass, Silver Plated
Environment	Indoor



The Model D4-A01 is 4 way Wilkinson microstrip power divider, in phase, 5 Watts input power working into a 2:1 VSWR load mismatch. It is supplied with an SMA input connector and (4) BNC output connectors that can be changed to other types including QMA if needed. The unit has a

minimum isolation of 18 dB and this product can also be modified to add a sampling coupler at the input port.

