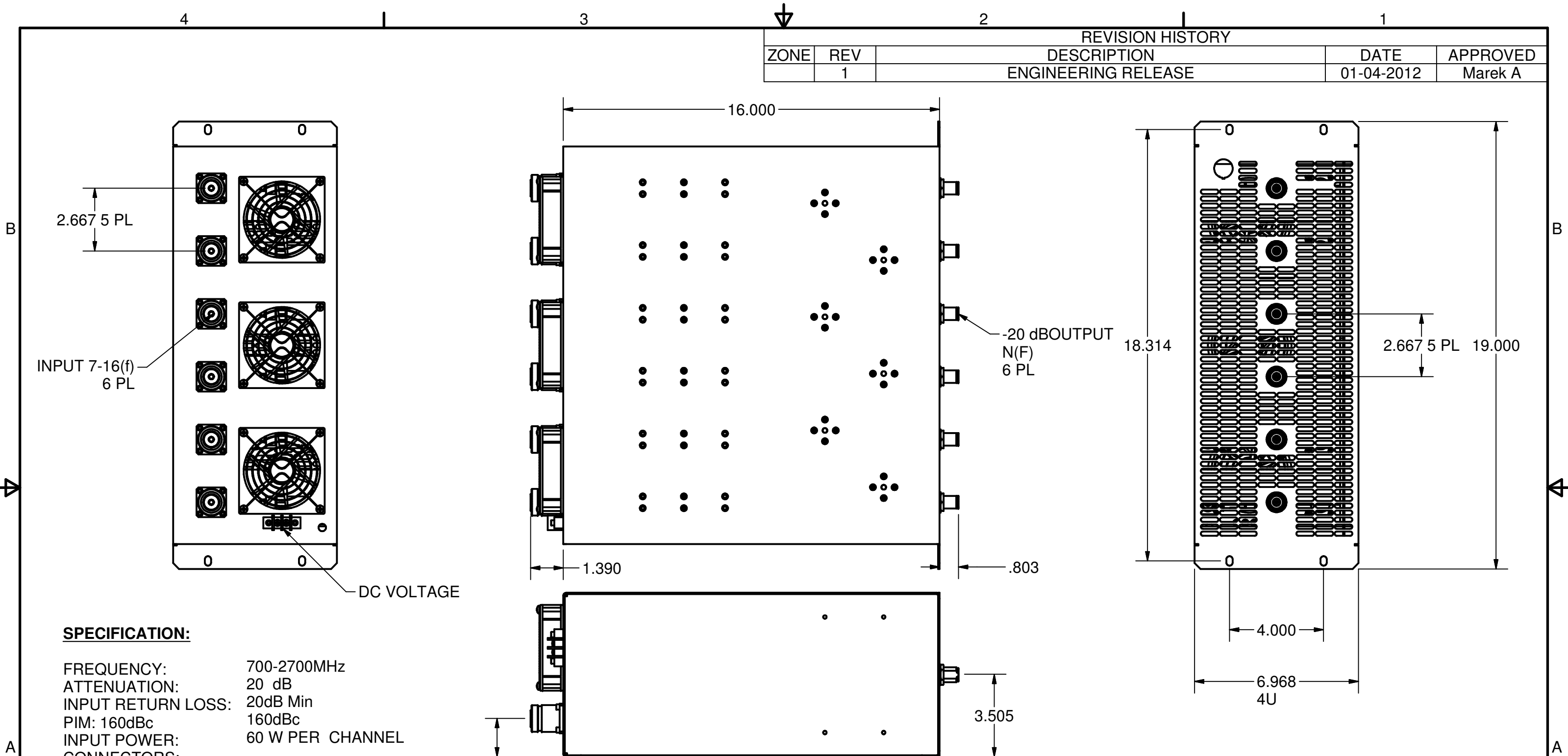



REVISION HISTORY				
ZONE	REV	DESCRIPTION	DATE	APPROVED
	1	ENGINEERING RELEASE	01-04-2012	Marek A



**SPECIFICATION:**

FREQUENCY: 700-2700MHz  
 ATTENUATION: 20 dB  
 INPUT RETURN LOSS: 20dB Min  
 PIM: 160dBc  
 INPUT POWER: 60 W PER CHANNEL  
 CONNECTORS:  
     OUTPUT N(f), FRONT PANEL  
     INPUT 7-16 DIN(f), REAR PANEL  
 DC Power: Screw type terminal block, -48Vdc  
 Cooling: FORCED AIR: (3) -48Vdc FANS PROVIDED  
 Temperature range : AMBIENT  
 Configuration: 4U 19 inch rack mount, (6) connectors and on/off switch on front panel, (3) fans, DC terminal block connector and 6 DIN connectors on rear panel.

DRAWN marekant	10/26/2011	 R&D Microwaves LLC, USA
CHECKED		
QA		TITLE
MFG		6 CHANNEL LOW PIM HIGH POWER ATTENUATOR, 20 dB, 4U
APPROVED		SIZE B
		DWG NO DAS-A03rev1
		SCALE
		REV 1
		SHEET 1 OF 1