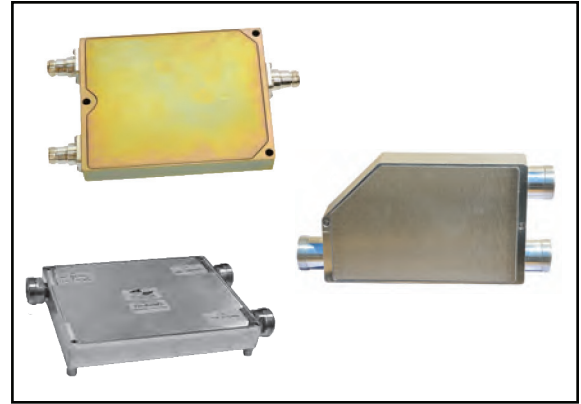
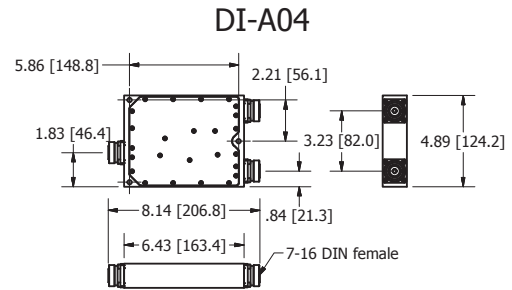
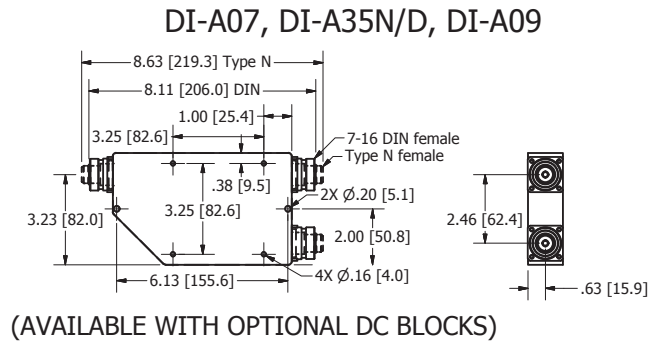
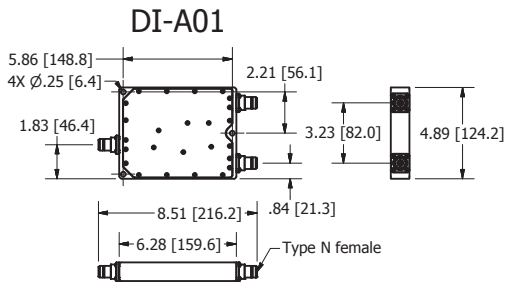
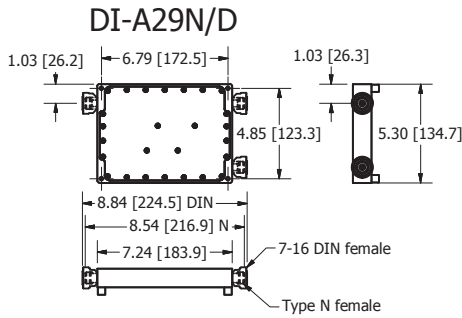
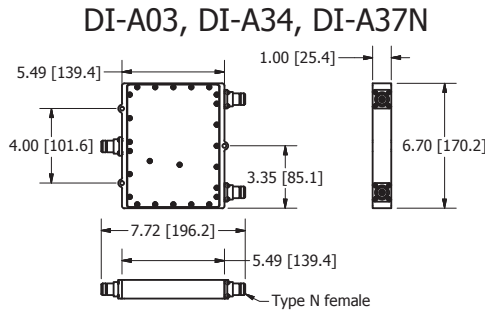


DIPLEXER-FILTERS-CROSSBAND COUPLERS

Common Specifications	
Frequency:	per chart below
Passive Intermodulation (PIM):	153 - 160 dBc
DC Continuity:	Optional for some models
Connectors:	7-16 DIN or Type N
Material:	Clear Iridate, Triplate connectors
Environment:	IP 67
Temperature:	-20 to +70°C



Made in USA.



Frequency (MHz)		Model		PIM (dBc)	Isolation Low/High (dB)	Insertion Loss		Return Loss (dB)	RF Power (Watts)	
Low	High	N	DIN			Low Band	High Band		Low Band	High Band
DC-470	791-862	DI-A37N	DI-A37D	155	45/40	0.3	0.75	17.7	150	100
DC-470	830-970	DI-A03N	DI-A03D	155	45	0.3	0.75	17.7	150	100
DC-500	800-900	DI-A34	DI-A34D	160	40	0.3	0.75	17.7	150	100
700-960	1710-2170	DI-A29N	DI-A29D	160	50	0.15	0.25	20.0	250	250
824-1000	1710-2170	DI-A09	DI-A07	155	50	0.3	0.5	20.8	150	250
790-960	1710-2170	DI-A35N	DI-A35D	155	50	0.3	0.5	20.8	250	150
DC-2170	2400-2500	DI-A01	DI-A04	155	45	0.5	1.0	17.7	150	150



R&D Microwaves LLC, 301 Rockaway Valley Road, Boonton, NJ 07005 USA
 Tel. 908.212.1696 www.rdmicrowaves.com
 email: sales@rdmicrowaves.com

Rev 1.3
 06/30/15

