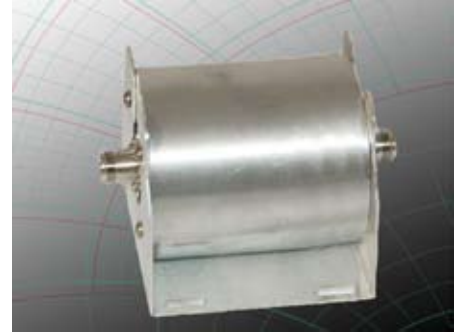
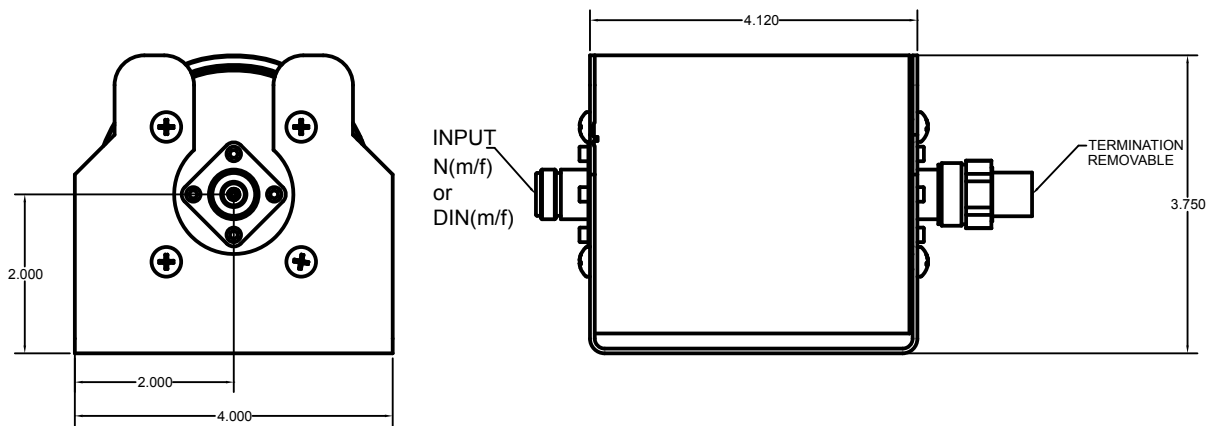


Model		TA-A23
Frequency range		700 - 2900 MHz
Power		150 Watts Avg 3kW peak
Passive Intermodulation (PIM)		>160 dBc
Impedance		50 $\Omega$
Return Loss	TYPE N	23dB
Connectors		TYPE N (m/f), DIN (m/f)
Temperature		-40° C to + 165° C

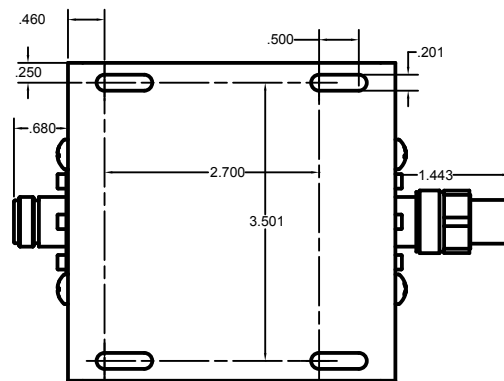


The TA-A23 was designed and manufactured as a low PIM high power termination for use as at termination on Hybrids or Couplers. It is intended for broad frequency coverage and excellent return loss. The unit is supplied with a 3 Watt Type N male connector that functions as a 50 Ohm termination to ground serving a DC path to ground.

One of the applications for this termination when connected to the mainline output of a directional coupler, is to use the coupled port of the coupler as a high power, low PIM, broadband flat attenuator.



TA-23NF = N(f)  
 TA-23NM = N(m)  
 TA-23DF = DIN(f)  
 TA-23DM = DIN(m)



- Multi-Band Range
- High Isolation, Low VSWR and Low Loss
- Rugged, Flange Mount Connector with O-ring
- ROHS Compliant